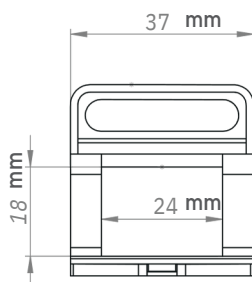


General information

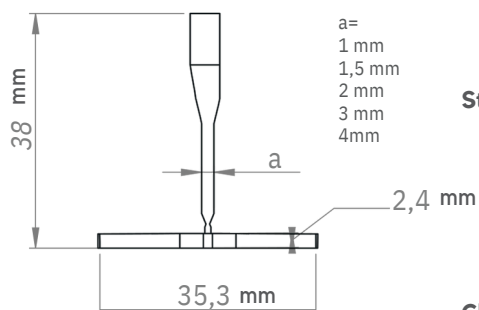


Overview

Professional spacer clips allow you to align all tiles while ensuring a perfect joint width between them. For tile thicknesses of min. 3 mm to max. 12 mm. You need to use a wedge separator for very thin tiles <6 mm.

Recycling instructions

The product is not hazardous or toxic and it is suitable for recycling. If it can't be recycled, the waste material can be disposed at a suitable landfill site, or at an approved waste incineration facility in accordance with applicable local, provincial, state and federal regulations.



Storage information

The product should be stored in a dry area with an ambient temperature below 50°C. It should be kept away from sunlight, sparks, heat and flame. Inappropriate storage conditions can lead to color changes and the deterioration in physical properties.

Classification of the Substance

The formulation and production of PETOPLIN EH102 conforms to the compositional requirements of the Commission Regulation (EU) No. 10/2011.

Raw Materials



Type of material

Homopolymer

Material Code

Polypropylene (PP)

Colour

Natural

Product specifications

Properties	Typical Value (*)	Unit	Test Method
Resin Properties			
Melt Flow Rate (230°C/2.16 kg)	11	g/10 min	ASTM D1238
Density	0.905	g/cm ³	ASTM D1505
Melting Point (DSC)	163	°C	ASTM D3418
Mechanical Properties (**)			
Tensile Strength at Yield	35	MPa	ASTM D638
Flexural Modulus, 23°C	1450	MPa	TS EN ISO 178
Izod Impact Strength, 23°C (notched)	20	J/m R-	ASTM D256
Rockwell Hardness	96	scale	ASTM D785
Thermal Properties			
Heat Deflection Temperature, 0.45 MPa	113	°C	ASTM D648

(*) These are typical properties only and are not to be construed as specifications. Customers should confirm results by their own tests.

(**) The values given are measured based on compression molded sheet.